

TEKFA compression load cell

Model RBS



TEKFA's stainless steel load cell, model RBS, is a compact and simple unit for solving many different weighing tasks. The RBS load cells are suitable for a wide range of purposes and are typically used in silos, tanks, platform scales, and various dosing systems.

The load cell housing is made of stainless steel, and with an IP68 rating, the electronics are protected against both water and dust.

The RBS series is produced with capacities ranging from 150 kg to 15 ton. All TEKFA's load cells are standard-calibrated, meaning they have the same zero point and the same amplification of 1.8 mV/V. Therefore, a load cell can be replaced with another of the same capacity without recalibrating the weighing system.

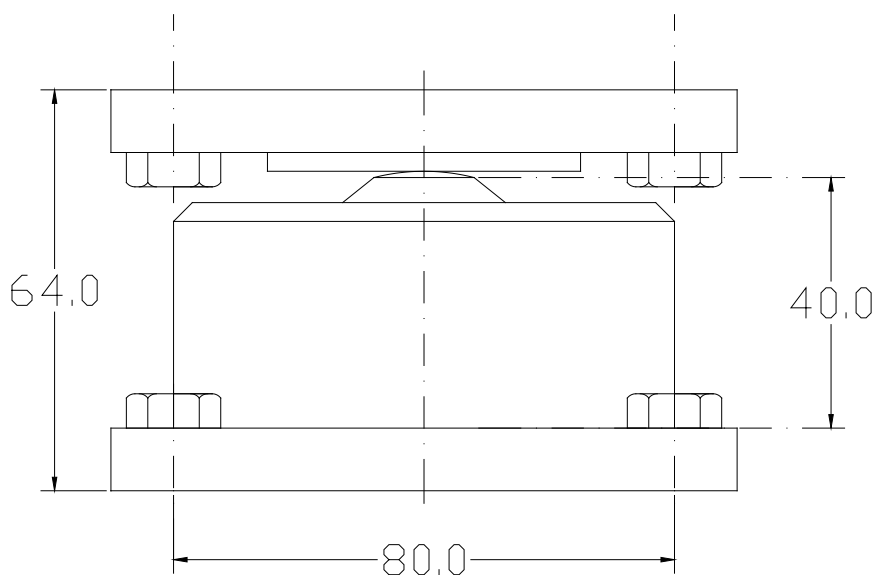
The load cells can be connected to all 350Ω full-bridge load amplifiers as well as TEKFA's instruments. TEKFA's weight indicators include everything from weight display and preset instruments to PLC and weighing computers with special programs.

Specifications	
Tolerance in % of maximum load	±0.1%
Rated output	1.8 ± 0.1% nominal load mV/V
Supply recommended	10V (VDC/VAC)
Supply max.	15V (VDC/VAC)
Output resistance	350 Ω
Input resistance	350-400 Ω
Operating temperature range (C°)	-30 - +70
Safe overload	20%
Destructive overload	50%
Cable length (standard)	5 meters
Protection rating	IP68, 20 bars
Material	Stainless steel
Net weight including cable	1.1 kg

Options

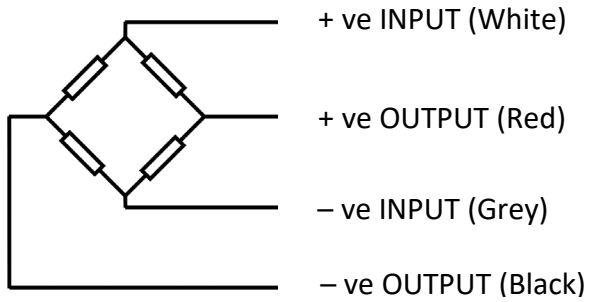
Extra cable:	Up til 100 meters
Mount:	See data sheet on silo mount
Isolation mount:	We recommend the mounting of RBOU isolation mount for protection against fault currents.

Dimensions (sketching)



The height of 64 mm includes the isolation mount above and below the load cell.

Colour code



Item no.	Capacity in kg	Item no.	Capacity in kg	Item no.	Capacity in kg
RBS00150	150	RBS00700	700	RBS07000	7,000
RBS00175	175	RBS01000	1,000	RBS10000	10,000
RBS00200	200	RBS01500	1,500	RBS12500	12,500
RBS00350	350	RBS02000	2,000	RBS1500	15,000
RBS00500	500	RBS03500	3,500		
RBS00650	650	RBS05000	5,000		