

Pneumatic slide valve type SV5

Type SV5-R with round passage $\varnothing 100$ - $\varnothing 300$

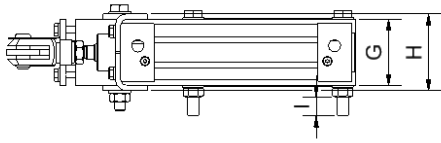


TEKFA's slide valves are suitable for both powders and granulates and are made of food-grade plastic and stainless steel. This combination ensures high wear resistance, quiet operation, and very low friction.

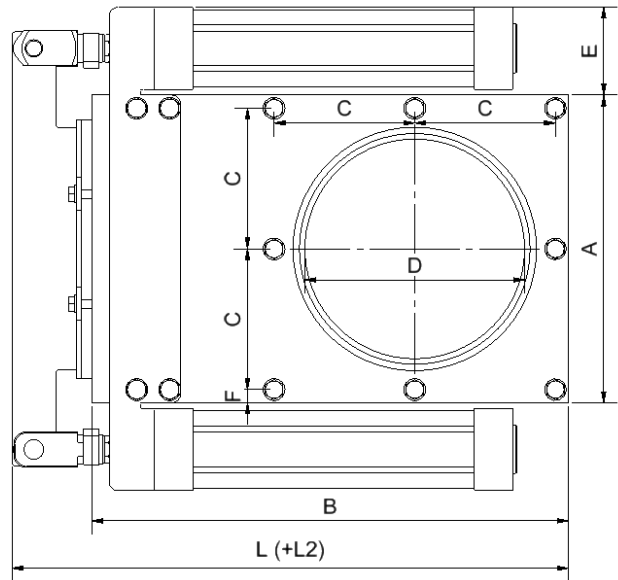
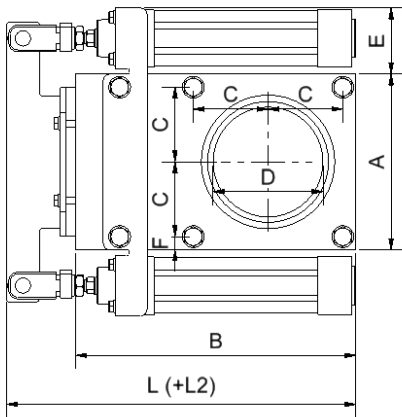
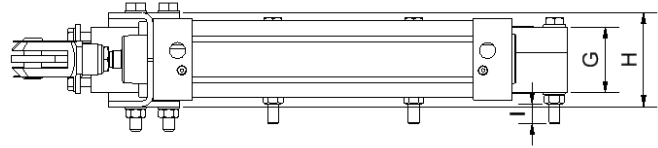
The slide valves are equipped with two double-acting pneumatic cylinders with built-in, adjustable brakes. They can be delivered complete with a mounted solenoid valve for controlling the cylinders.

The valves can be mounted in both the inlet and outlet of a container or in a piping system, as the inlet and outlet flanges have the same dimensions. A gasket between the gate and the mating flange is not necessary if the flanges are flat.

Type SV5-R 100-150



Type SV5-R 200-300



SV5 dimensions											
Type	A	B	C	D	E	F	G	H	I	L	L2*
100-R	160	255	68	100	60	12	60	70	17	318	105
150-R	210	326	93	150	75	12	60	80	17	394	155
200-R	280	434	128	200	80	12	59,5	85,5	17	507	205
300-R	380	565	178	300	100	12	80	100	17	640	305

* L2 is the stroke length of the cylinders.

Data

Connection	Compressed air 6-10 bar, lubricated or non-lubricated air
Construction	White polyethylene and stainless steel AISI 304
Temperature range	-20 to +80°C
Connection flange thickness	Total thickness max. 15 mm

Additional accessories

Solenoid valve mounted
ATEX 21/22

Acid-resistant cylinders
Plastic material
Indication of closed/open

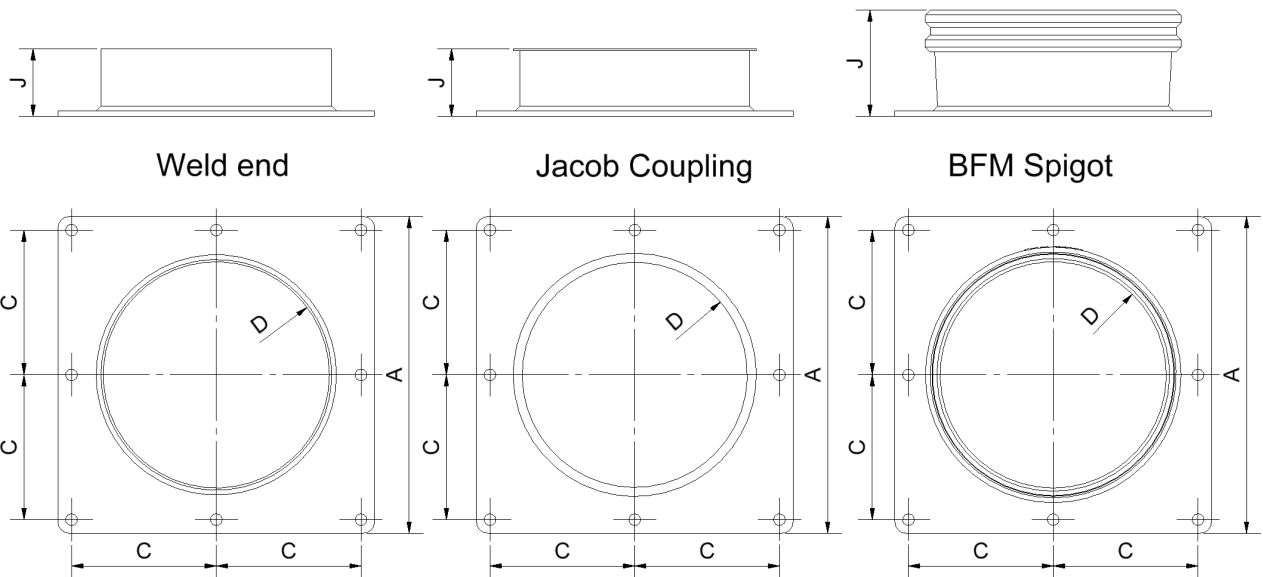
Electropolished gate
Connection flange

Connection AC 50/60Hz or 220-240 V or DC 24 V. IP 65
The unit is equalized to safely discharge all electrical potentials.
The solenoid valve is replaced with a solenoid valve approved for zone 22.

Stainless acid-resistant steel AISI 316
Plastic sheets of POM C

Magnetic contacts. Closing function. Operating voltage 0-240 VDC,
2 m cable.

Brackets and packing gland can be electropolished.
Weld end/Jacob Coupling or BFM spigot



Type	J
Weld end	60
Jacob Coupling	60
BFM spigot	94

A, C, and D dimensions are the same as the gate.