

# RBMC

## Stainless steel compression load cell



TEKFA's RBMC stainless steel compression load cell is a compact and simple load cell for applications where a load cell with high capacities is required. The applications of RBMC load cells are big-ger silo and tank plants within the food industry, chemical industry, and other demanding industrial environments. The load cell is produced in stainless steel with a tightness of IP68, protecting the electronics against dust and water. The RBMC series includes the capacities 20, 30 and 50 tons.

TEKFA's load cells are standard calibrated. This means that one load cell may be replaced with another with the same capacity without re-calibrating the whole weighing system.

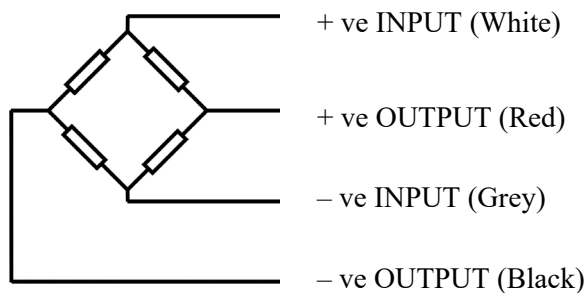
The load cells may be connected to most weighing amplifiers and weight indicators and be connected to PLC and PC.

Item number	Capacity	Item number	Capacity	Item number	Capacity
RBMC20	20T	RBMC30	30T	RBMC50	50T

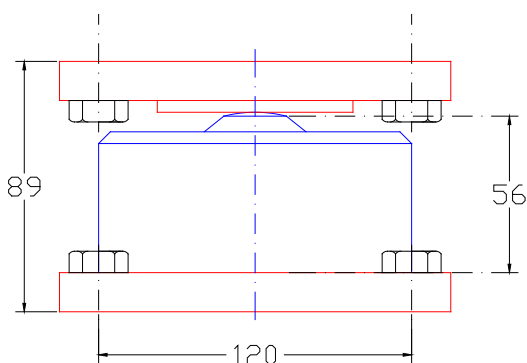
## Specifications

Total error in % of maximum load	$\pm 0.1 \%$
Rated output (mV/V)	$1.8 \pm 0.1\%$
Supply recommended (VDC or VAC)	10V
Supply max. (VDC or VAC)	15 V
Impedance output ( $\Omega$ )	350
Impedance input ( $\Omega$ )	350 - 400
Operation temperature range (C °)	-30 - +70
Overload without effect	20 %
Destructive overload	50 %
Cable length (standard)	5 m
Tightness	IP 68; 20 bar
Material	AISI 304
Own weight	Ca. 3.5 kg

## Cable color



## Dimensions



The height of 89 mm is inclusive isolation mount above and under the load cell..

### NB:

We recommend the mounting of a isolation mount of the type RBMOU to protect against fault currents.