

RBC LOAD CELL



- Stainless steel construction
- Suitable for tank weighing
- Suitable for damp environments
- Capacity 5, 10 & 15 tons
- Environmental protection IP 68

TEKFA's stainless steel compression load cell, model RBC, is a compact low profile load cell for various weighing purposes. The RBS is designed for weighing applications such as silos, tanks, platform scales as well as dosing units.

The load cell is manufactured in stainless steel and hermetically sealed to IP68.

The RBC load cell is manufactured in the capacities 5, 10 and 15 tons.

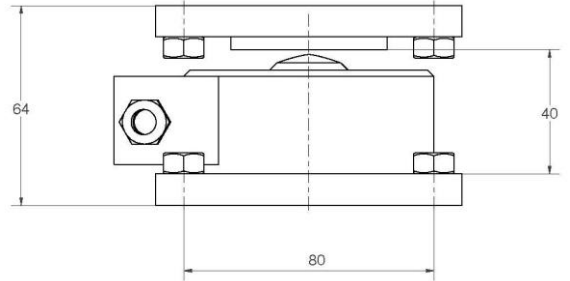
The load cells may be connected to all common instrument and transmitters as well as TEKFA's instruments. TEKFA's weighing instruments range from simple weighing indicators, to PLC and weighing computers with special programs designed for the customer.

RBC-07.12-dk

Specification

Capacity	5 – 10 – 15	tons
Signal	1,8 ± 0,003	(mV/V)
Total error in % of max load	± 0,05	% F.S.
Creep (30 min)	± 0,05	% F.S.
Zero balance	± 1	% F.S.
Input resistance	750 ± 20	Ω
Output resistance	702 ± 3	Ω
Insulation resistance	≥ 5000	Ω
Operating temperature range	-30 - +70	C °
Max load limit	120	% F.S.
Max side load limit	150	% F.S.
Recommended excitation	10 – 12 V	VDC/ VAC
Maximum exercitation.	15 V	VDC/ VAC
Construction	304	AISI
Protection class	IP 68	
Cable length (standard)	5	m
Weight	1,3	kg

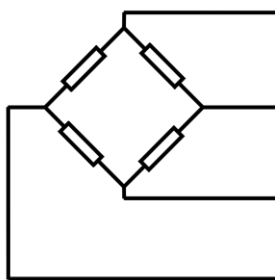
Dimensions



The isolation mounts over and under the load cell are inclusive of the 64 mm in height.



Colour code



- + ve INPUT (Red)
- + ve OUTPUT (Green)
- ve INPUT (Black)
- ve OUTPUT (White)

Screen black thick

Extra accessories

Mounts:

Please see datasheet for mount and photo above

Insulation mount:

It is recommend that a insulation mount of type RBOU1 for protection against faulty current

Item number	Capacity in kg	Item number	Capacity in kg	Item number	Capacity in kg
RBC5000	5.000	RBC10000	10.000	RBC15000	15.000